

05

2 Bedrooms, 2 Baths
1398 SQFT + Balcony

SOLAIA



NOTES

LIVING

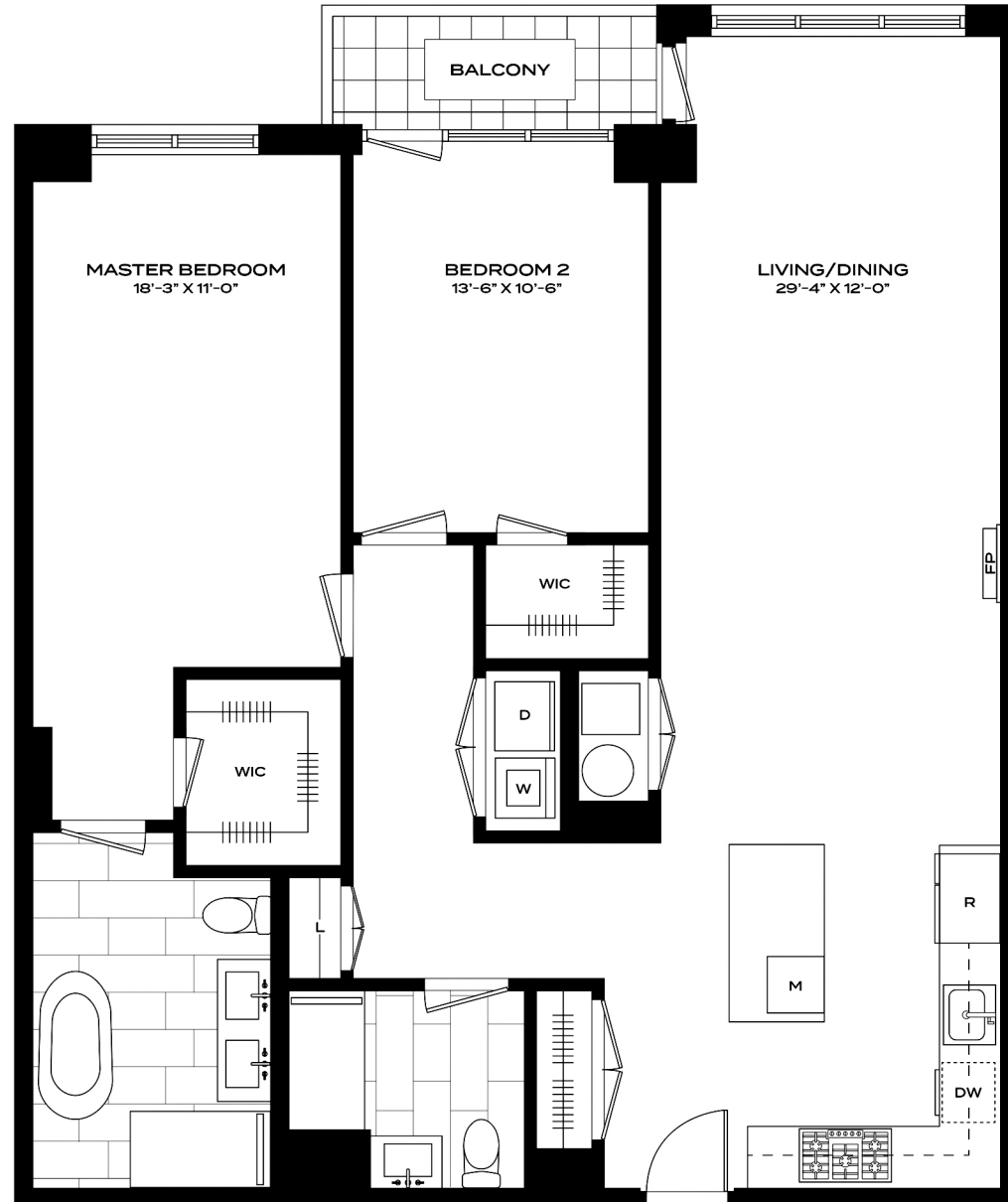
- LED Lighting with Smart Switches
- WIFI Enabled Thermostats
- Gas Fireplaces
- Full Size Washer/Dryer

KITCHEN

- WIFI Enabled GE Café Appliances
- Custom Pendant Light
- Sapien Stone Countertops
- Custom Italian Cabinetry

BATHS

- KRION Soaking Tubs or Hydro Systems Whirlpool Tub
- Custom Italian Cabinetry



201-346-8888
ChenAgency.com

All information furnished from sources deemed reliable. No warranty is made as to the accuracy and is submitted subject to errors, omissions, prior sale, rental, or withdrawal without notice. Floorplan is for illustration purposes only and may not depict actual building conditions. All room dimensions approximate.
©Copyright T.C.A. All Rights Reserved